

MLS Area LS

Listings	This Month			Year-to-Date		
	Sep 2021	Sep 2020	Change	2021	2020	Change
Single Family Sales	125	188	-33.5%	1,207	1,320	-8.6%
Condo/TH Sales	19	20	-5.0%	137	118	+16.1%
Total Sales	144	208	-30.8%	1,344	1,438	-6.5%
New Homes Only	7	21	-66.7%	98	158	-38.0%
Resale Only	137	187	-26.7%	1,246	1,280	-2.7%
Sales Volume	\$138,417,005	\$157,971,334	-12.4%	\$1,237,206,870	\$1,026,296,084	+20.6%
New Listings	194	164	+18.3%	1,703	1,771	-3.8%
Pending	99	170	-41.8%	211	1,551	-86.4%
Withdrawn	23	16	+43.8%	142	222	-36.0%
Expired	7	5	+40.0%	40	90	-55.6%
Months of Inventory	1.4	1.1	+28.0%	N/A	N/A	--

Average	This Month			Year-to-Date		
	Sep 2021	Sep 2020	Change	2021	2020	Change
List Price	\$974,816	\$769,046	+26.8%	\$893,855	\$729,631	+22.5%
List Price/SqFt	\$327	\$251	+30.4%	\$297	\$232	+28.2%
Sold Price	\$961,229	\$759,478	+26.6%	\$920,541	\$713,697	+29.0%
Sold Price/SqFt	\$326	\$248	+31.2%	\$307	\$228	+34.9%
Sold Price / Orig LP	99.6%	97.7%	+1.9%	104.1%	97.1%	+7.2%
Days on Market	19	54	-65.1%	22	65	-65.4%

Median	This Month			Year-to-Date		
	Sep 2021	Sep 2020	Change	2021	2020	Change
List Price	\$767,000	\$617,000	+24.3%	\$717,273	\$589,000	+21.8%
List Price/SqFt	\$297	\$215	+38.2%	\$268	\$207	+29.3%
Sold Price	\$772,500	\$611,210	+26.4%	\$745,515	\$580,000	+28.5%
Sold Price/SqFt	\$292	\$215	+35.9%	\$280	\$205	+36.4%
Sold Price / Orig LP	100.0%	99.0%	+1.0%	102.0%	98.0%	+4.1%
Days on Market	11	20	-43.6%	6	28	-78.6%

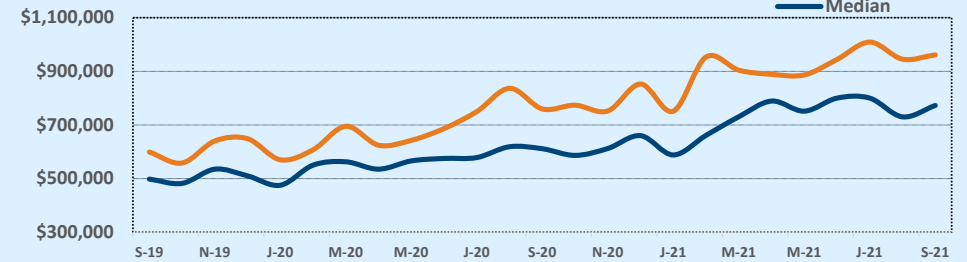
Residential Statistics

Independence Title

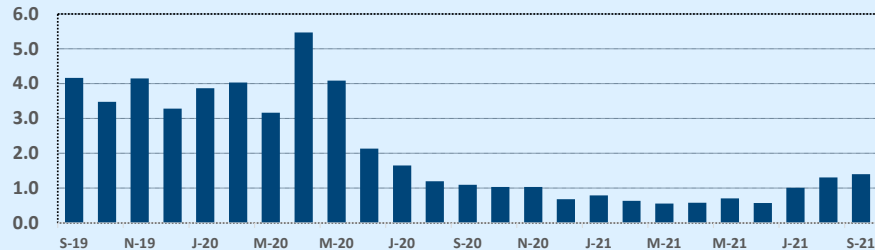
September 2021

Price Range	This Month			Year-to-Date		
	New	Sales	DOM	New	Sales	DOM
\$149,999 or under	--	--	--	2	--	--
\$150,000- \$199,999	--	--	--	--	--	--
\$200,000- \$249,999	--	1	13	7	7	19
\$250,000- \$299,999	1	--	--	16	11	43
\$300,000- \$349,999	2	4	11	23	23	47
\$350,000- \$399,999	4	1	31	45	33	14
\$400,000- \$449,999	8	6	17	70	53	11
\$450,000- \$499,999	9	7	13	101	67	11
\$500,000- \$549,999	9	14	16	92	93	16
\$550,000- \$599,999	18	16	16	134	100	16
\$600,000- \$699,999	20	8	13	218	181	19
\$700,000- \$799,999	33	19	25	233	188	22
\$800,000- \$899,999	23	22	11	178	124	27
\$900,000- \$999,999	8	11	13	128	101	17
\$1M - \$1.99M	50	24	19	348	293	21
\$2M - \$2.99M	5	6	36	64	49	50
\$3M+	4	5	64	44	21	108
Totals	194	144	19	1,703	1,344	22

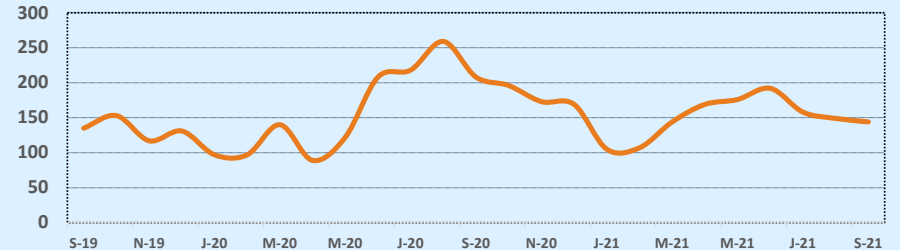
Average & Median Sales Price - Last Two Years



Months of Inventory - Last Two Years



Number of Sales - Last Two Years



Based on information from the Austin Board of REALTORS® (alternatively, from ACTRIS). Neither the Board nor ACTRIS guarantees or is in any way responsible for its accuracy. The Austin Board of REALTORS®, ACTRIS and their affiliates provide the MLS and all content therein "AS IS" and without any warranty, express or implied. Data maintained by the Board or ACTRIS may not reflect all real estate activity in the market.